

WHAT DOES PERFORMANCE STANDARD MEAN *for YOU?*

Performance Standard 



T



TRILENNIUM™  
MULTI-POINT LOCKING SYSTEMS



One simple way to put your mind at ease. Trilennium™ Multi-Point Locking Systems and Hardware Collection. Secure. Strong. Safe. Reliable. Easy. The best multi-point locking system available.

 **Endura**™  
PERFORMANCE STANDARD



# ONE

Security. Strength. Reliability. Performance. Peace of Mind.

One solid unit with three latches based on the strength of patented I-Beam construction for reliable, proven performance.

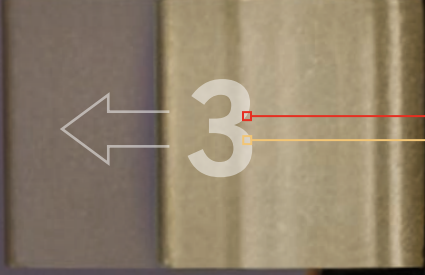
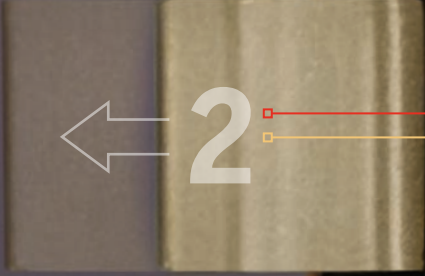
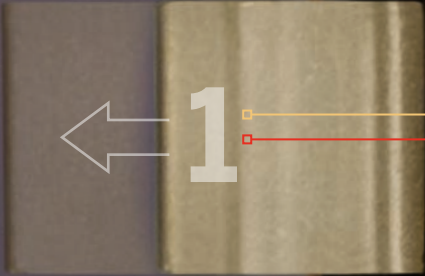
Operating as one, all three latches engage when the door is closed. One turn of the deadbolt or key activates all three latches. When activated, each latch becomes a deadbolt and cannot be compromised.

One single downward turn of the handle releases all three locks from the inside.

Three times the strength. Three times the security. Three times the protection. One multi-point system can be best at protecting your home. Trilennium™.

*A patented system of Strike Rollers and latches draws the door panel into perfect alignment with the jamb, eliminating deflection and ensuring a tight seal.*







# TRILENNIUM™ HARDWARE COLLECTION

# 1

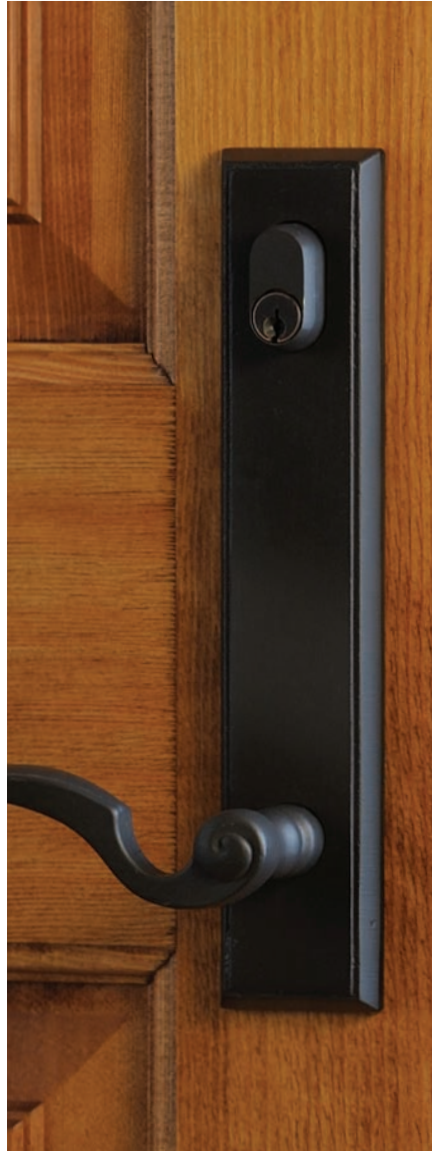
LEVEL ONE  
TRILENNIUM™

# 2

LEVEL TWO  
EMTEK®

# 3

LEVEL THREE  
Rocky Mountain  
Hardware®



Three levels of hardware are available. Each is designed specifically to work with Trilennium Multi-Point Locking Systems. Choose your level, choose your style, choose your finish, even choose your lever. The choice is yours!



Eclipse Entry Set  
FINISHED IN SATIN NICKEL



Pinnacle Entry Set  
FINISHED IN VICTORIAN BRONZE



Horizon Entry Set  
FINISHED IN BRIGHT BRASS

LEVEL ONE

TRILENNIUM™

Engineered for optimum performance with our locking system, the Trilennium hardware collection combines elegant design with precision engineering for beautiful, reliable performance. Trilennium hardware sets are offered in several finishes and three styles for a strong secure locking system that fits your decor. Hardware is available for entry, patio (including inactive) and passage doors.

**Eclipse Entrance Grip Handle Set**

FINISHED IN ANTIQUE NICKEL

*The first entrance grip set designed to work with multi-point locks:*

- Seven finishes
- Visual locked/unlocked indication
- 90° thumbturn rotation locks/unlocks



**AVAILABILITY**

- ECLIPSE 1, 2, 3, 4, 5, 6, 7
- PINNACLE 1, 2, 4
- HORIZON 1, 2
- ECLIPSE ENTRY GRIP 1, 3, 5, 6, 7

- 1. VICTORIAN BRONZE
- 2. BRIGHT BRASS
- 3. BRIGHT BRASS PVD
- 4. SATIN NICKEL
- 5. SATIN NICKEL PVD
- 6. ANTIQUE NICKEL
- 7. BLACK





# TRILENNIUM™ HARDWARE COLLECTION



Brass Modern  
FINISHED IN OIL RUBBED BRONZE



Sandcast Bronze Arched  
FINISHED IN SILVER PATINA



Sandcast Bronze Rectangular  
FINISHED IN DEEP BURGUNDY



Lost Wax Cast Bronze Tuscany  
FINISHED IN MEDIUM BRONZE

## LEVEL TWO

### EMTEK®

EMTEK is dedicated to bringing interesting, well made hardware back into American homes. Hardware crafted in solid sandcast bronze or lost wax cast bronze. Function and beauty are realized in beautiful hardware designed to drive the Trilennium™ Multi-Point Locking System.

#### Choose your escutcheon

*Four different styles*

#### Choose your finish

*Brass Modern, Four finishes*

*Sandcast Bronze, Four finishes*

*Tuscany Lost Wax Cast Bronze, Four finishes*

#### Choose your lever

*Brass Modern, 10 lever options*

*Sandcast Bronze, three lever options*

*Tuscany Lost Wax Cast Bronze, five lever options*



#### MODERN

1. OIL RUBBED BRONZE
2. SATIN NICKEL
3. POLISHED CHROME
4. STAINLESS STEEL



#### SANDCAST/LOST WAX CAST

5. SILVER PATINA
6. MEDIUM BRONZE
7. DEEP BURGUNDY
8. FLAT BLACK



**Curved Entry Set**  
FINISHED IN SILICON BRONZE MEDIUM



**Rectangular Entry Set**  
FINISHED IN SILICON BRONZE DARK



**Stepped Entry Set**  
FINISHED IN SILICON BRONZE MEDIUM



**Arched Entry Set**  
FINISHED IN WHITE BRONZE MEDIUM



**Fleur De Lis Entry Set**  
FINISHED IN SILICON BRONZE LIGHT

LEVEL THREE

**Rocky Mountain Hardware®**

Renowned Rocky Mountain Hardware has designed a collection of fine bronze hardware to work with Trilennium™ Multi-Point Locking Systems. Hand crafted, each piece is cast with the beauty and strength of art grade bronze and available in a range of deep, glowing patinas.

**Choose your escutcheon**

*Five different styles*

**Choose your finish**

*Nine different finishes*

**Choose your lever**

*Over 40 lever options*

**Arched Entrance Grip Handle Set**

FINISHED IN BRONZE RUST

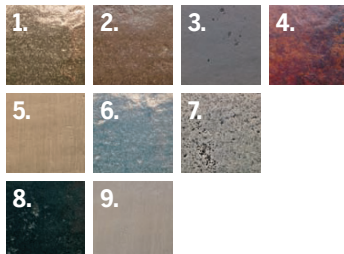
*Using TRILENNIUM technology, Rocky Mountain Hardware has designed a full collection of entrance grips featuring:*

- Four different functions
- Nine escutcheon styles in both one-piece and sectional styles.
- Nine different finishes
- Choose from over 40 interior levers



**FINISHES**

1. SILICON BRONZE LIGHT
2. SILICON BRONZE MEDIUM
3. SILICON BRONZE DARK
4. SILICON BRONZE RUST
5. SILICON BRONZE BRUSHED
6. WHITE BRONZE LIGHT
7. WHITE BRONZE MEDIUM
8. WHITE BRONZE DARK
9. WHITE BRONZE BRUSHED



## Choose your lock.

Available in four series, there is a Trilennium™ Multi-Point Lock to fit your entry system.

### TRILENNIUM 3000

*Multi-point security for standard door panels.*

### TRILENNIUM 7/8

*All the features of TRILENNIUM in a narrow profile designed for “proud edge” door panels.*

### TRILENNIUM 3020

French Mortise Lock

*For the inactive door in a french door unit the 3020’s I-Beam system adds strength and support to the door.*

### TRILENNIUM 3500

Five Point Lock

*Enhanced performance for french doors with five locking points.*

## Choose your hardware.

Three levels of hardware are available. Trilennium, EMTEK and Rocky Mountain Hardware offer hardware designed specifically to work with the Trilennium Multi-Point Locking System. You can choose your level, choose your style, choose your finish, even choose your lever. There’s a hardware set for every decor.



PERFORMANCE STANDARD

8817 W. Market St., Colfax, NC 27235  
**1.800.334.2006** [www.enduraproducts.com](http://www.enduraproducts.com)

U.S. Patents 5,290,077; 5,388,875 and others

The information contained in this document is the confidential and proprietary information and trade secrets of Endura Products, Inc. Any disclosure, use or dissemination of such information without the express written permission of Endura Products, Inc. is strictly prohibited. Endura Products, Inc. also owns any and all intellectual property rights embodied in such information, including patent rights, copyrights, and trademark rights, and no license of any intellectual property right is intended, nor should any license be implied, as a result of the receipt of this document.

Contact us for more information.